



Easy Chess Puzzle # 0133

By

G Bud Games
<https://gbud.in>

February 10, 2022

Contents

1	Easy Chess puzzle # 0133 - How do you respond after losing your queen	3
1.1	Easy chess puzzle 0133	4
1.2	Solution to easy chess puzzle 0133	4
1.2.1	Solution 1	5
1.2.2	Right moves for the solution to the easy chess puzzle 0133	7
1.2.3	Explanation for the moves	7
1.3	Categories of easy chess puzzle 0133	8
1.4	easy chess puzzle 0133 chart	8
1.5	How to view the solution to easy chess puzzle 0133	10
1.6	How to get help for moves in the easy chess puzzle 0133	11
1.7	Play chess for free	12

List of Figures

1.1	Solve this easy chess puzzle 0133. How do you respond after losing your queen @ https://gbud.in/g9q4t71	4	
1.2	Solve this chess puzzle online with solution @ https://gbud.in/g9q4t71	4	4
1.3	Initial board position of easy chess puzzle 0133	5	
1.4	Nxd5	6	
1.5	Ra8#	7	
1.6	easy chess puzzle 133 chart 1	8	
1.7	easy chess puzzle 133 chart 2	9	
1.8	easy chess puzzle 133 chart 3	9	
1.9	easy chess puzzle 133 chart 4	10	
1.10	Click the solution button to view solutions @ https://gbud.in/g9q4t71	10	
1.11	Click the help button to get help on next move @ https://gbud.in/g9q4t71	11	
1.12	Solve more easy puzzles @ https://gbud.in/chsezpz	11	
1.13	Solve other puzzles @ https://gbud.in/chsgppz	12	
1.14	Play chess online for free. Solve puzzles and play with friends	12	
1.15	Solve this puzzle online by scanning this QR code or go to the link below	13	

Chapter 1

Easy Chess puzzle # 0133 - How do you respond after losing your queen

Solve this easy chess puzzle and improve your chess games through improvement of your chess strategies and chess tactics.

Puzzle No : 0133

Difficulty level : Easy

Description : How do you respond after losing your queen

Next Move : White

Player level : Beginner

Short URL for puzzle : <https://gbud.in/g9q4t71>

1.1 Easy chess puzzle 0133

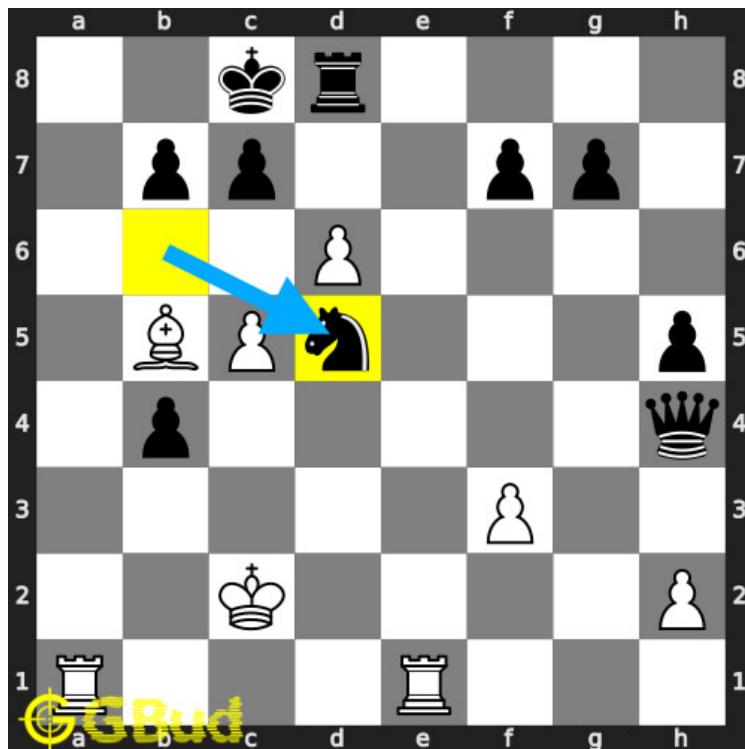


Figure 1.1: Solve this easy chess puzzle 0133. How do you respond after losing your queen @ <https://gbud.in/g9q4t71>



Figure 1.2: Solve this chess puzzle online with solution @ <https://gbud.in/g9q4t71>

Dont forget to check out [chess puzzles](#), [easy chess puzzles](#), [medium chess puzzles](#), [hard chess puzzles](#) and [chess puzzles collections](#) .

1.2 Solution to easy chess puzzle 0133

At this puzzle, next [move](#) is by [White](#). The objective of the puzzle is to how do you respond after losing your queen.

See the interactive solution at the [puzzle page](#)

1.2.1 Solution 1

1.2.1.1 Initial board position

This is the initial board position of easy chess puzzle 0133.

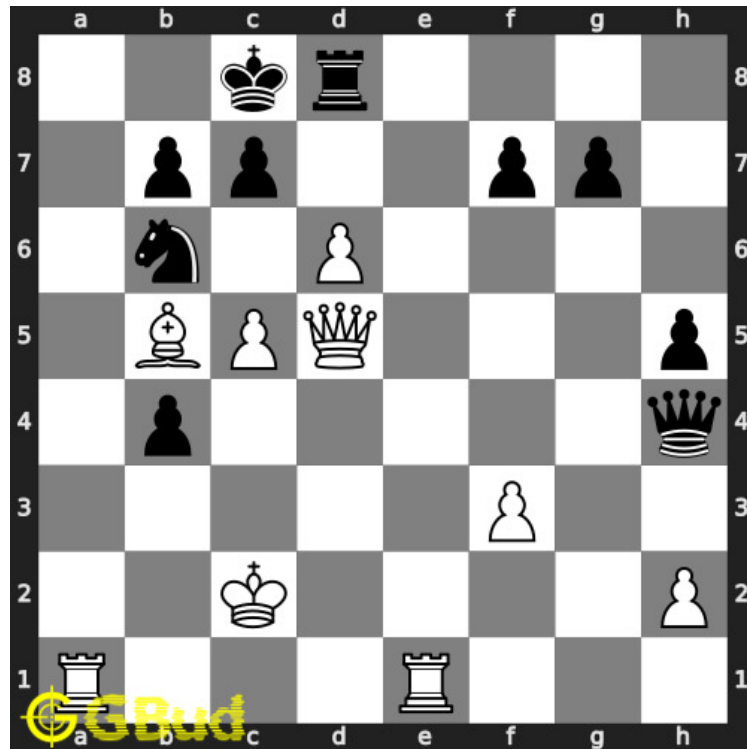


Figure 1.3: Initial board position of easy chess puzzle 0133

1.2.1.2 Move 1

Move by black

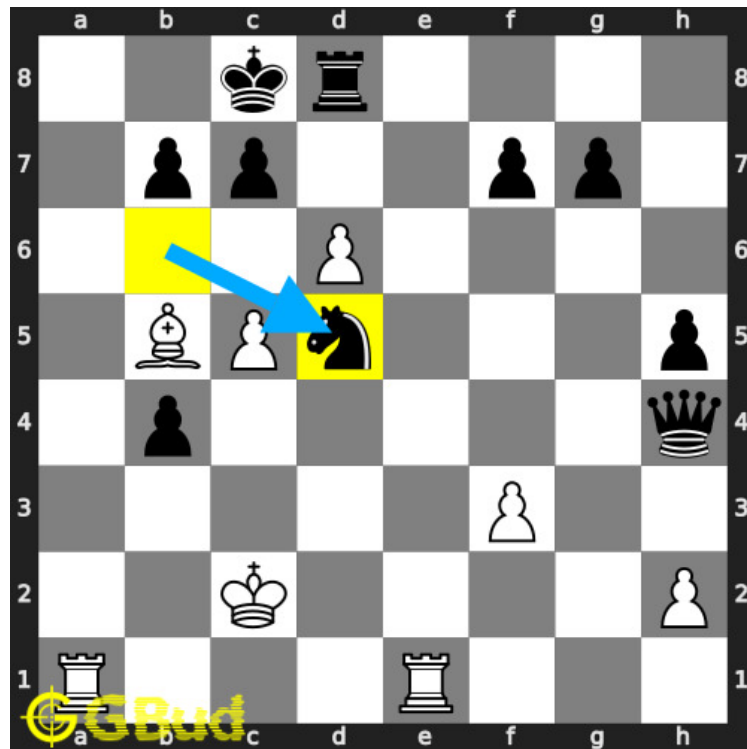


Figure 1.4: Nxd5

opponent's **knight captures** your hanging **queen**. this is a mistake as the **knight** gave up its support to **a8**.

1.2.1.3 Move 2

Move by white

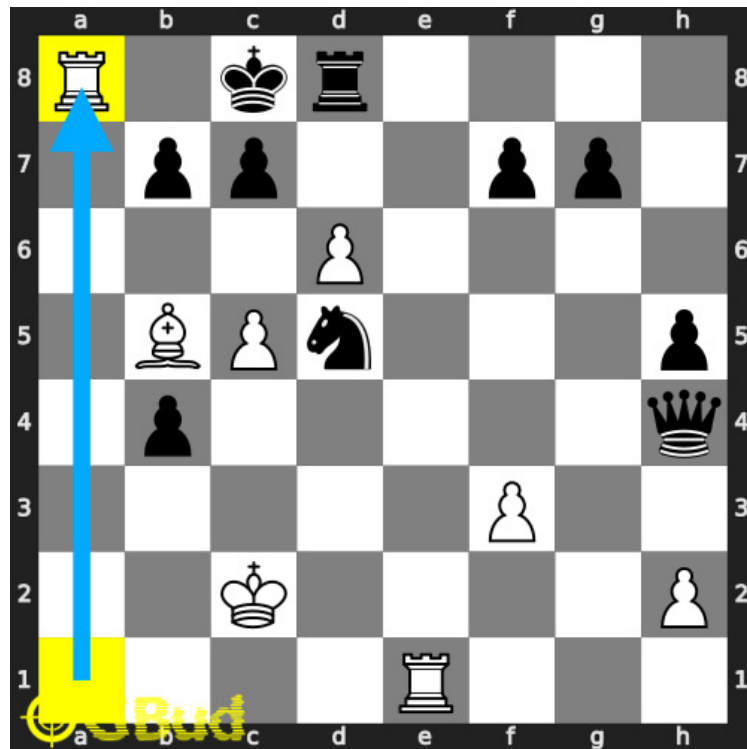


Figure 1.5: Ra8#

since a8 is free, your rook moves to a8 and checkmate. opponent's king can't move due to the additional attack from your bishop and the block by friendly pawns. this is how you can respond after losing your queen.

1.2.2 Right moves for the solution to the easy chess puzzle 0133

Based on the objective of the puzzle, you have to make the right moves. Following are the right moves

1. Ra8#

1.2.3 Explanation for the moves

1. Nxd5 - opponent's knight captures your hanging queen. This is a mistake as the knight gave up its support to a8.
2. Ra8# - Since a8 is free, Your rook moves to a8 and checkmate. Opponent's king can't move due to the additional attack from your bishop and the block by friendly pawns. This is how you can respond after losing your queen.

3. For right move - You perfectly understood that the checkmate is superior than losing the queen. Thats the way to do it.
4. For wrong move - You could have had a checkmate by moving the rook. Try again

1.3 Categories of easy chess puzzle 0133

This easy chess puzzle falls in these categories.

1. [Easy chess puzzles](#)
2. [Sacrifice puzzles in chess](#)
3. [Mate in 1 puzzles in chess](#)
4. [Endgame puzzles in chess](#)
5. [Strategy puzzles in chess](#)
6. [Rook puzzles in chess](#)

1.4 easy chess puzzle 0133 chart



Figure 1.6: easy chess puzzle 133 chart 1



Figure 1.7: easy chess puzzle 133 chart 2



Figure 1.8: easy chess puzzle 133 chart 3



Figure 1.9: easy chess puzzle 133 chart 4

1.5 How to view the solution to easy chess puzzle 0133

To view the [solution to this puzzle](https://gbud.in/g9q4t71), follow the steps given below

1. Go to the [puzzle page](https://gbud.in/g9q4t71)
2. Click the solution button (Key as shown [below](https://gbud.in/g9q4t71)) to view the solution



Figure 1.10: Click the solution button to view solutions @ <https://gbud.in/g9q4t71>

1.6 How to get help for moves in the easy chess puzzle 0133

To get help or the possible next moves in the puzzle, , follow the steps given below

1. Go to the [puzzle page](#)
2. Click the help button (exclamation mark as shown [below](#)) to get help or suggestion on next possible [move](#)



Figure 1.11: Click the help button to get help on next move @ <https://gbud.in/g9q4t71>



Figure 1.12: Solve more easy puzzles @ <https://gbud.in/chsezpz>



Figure 1.13: Solve other puzzles @ <https://gbud.in/chsgppz>

1.7 Play chess for free



Figure 1.14: Play chess online for free. Solve puzzles and play with friends

Play chess for free at <https://gbud.in/chs>

We present you a platform to play chess online with friends for free. No need to install any app. You can play chess for free without registration or login.

Simple. You can do several chess related activities.

1. [solve chess puzzles](#)
2. [learn about chess](#)

3. [play chess with computer](#)
4. [play chess with friend](#)
5. [create your own chess games](#)
6. [fen viewer](#)
7. [fen editor](#)
8. [fen generator](#)
9. [pgn viewer](#)
10. [chess board editor](#)
11. [view famous chess games.](#)



Figure 1.15: Solve this puzzle online by scanning this QR code or go to the link below

<https://gbud.in/g9q4t71>

Read the latest article on Easy Chess puzzle # 0133 - How do you respond after losing your queen by scanning this QR code or click the link

Previous article : [« Easy Chess puzzle # 0132 - What is the better move than losing your rook](#)

Next article : [Easy chess puzzles »](#)

Access the latest version of this article at
<https://gbud.in/blog/game/chess/easy-chess-puzzles/easy-chess-puzzle-0133.html>

[Back to top](#)

[Contact Us](#)

© GBud Games 2021